

UTPB



FACT BOOK

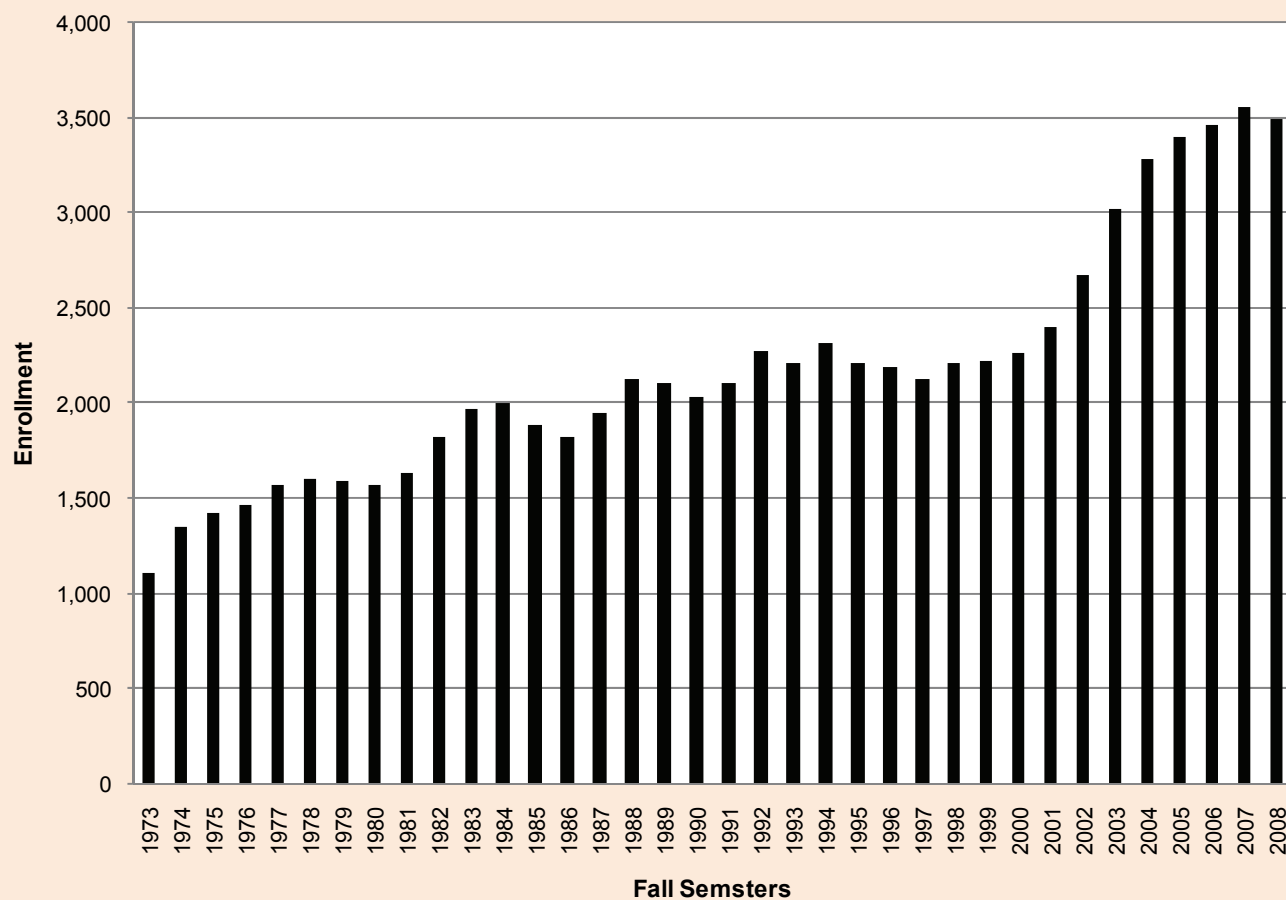
2008 -2009



Office of Institutional Research and Planning, Spring 2009

Enrollment

The University of Texas of the Permian Basin
Historical Headcount



Year (Fall)				1973	1974	1975	1976	1977	1978	1979
Headcount				1,112	1,352	1,432	1,471	1,575	1,602	1,598
Year (Fall)	1980	1981	1982	1983	1984	1985	1986	1987	1988	1989
Headcount	1,578	1,640	1,825	1,975	2,003	1,895	1,822	1,956	2,132	2,111
Year (Fall)	1990	1991	1992	1993	1994	1995	1996	1997	1998	1999
Headcount	2,041	2,107	2,282	2,219	2,315	2,217	2,193	2,130	2,214	2,224
Year (Fall)	2000	2001	2002	2003	2004	2005	2006	2007	2008	
Headcount	2,272	2,409	2,672	3,028	3,291	3,406	3,462	3,559	3,496	



Freshman Profile

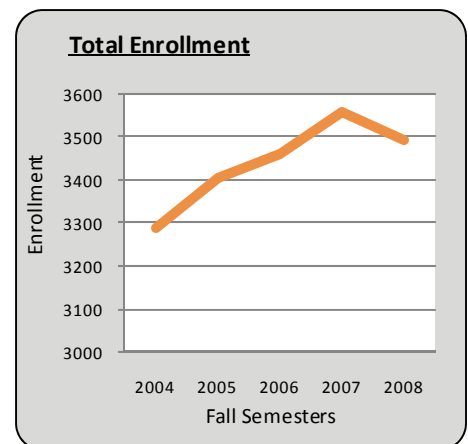
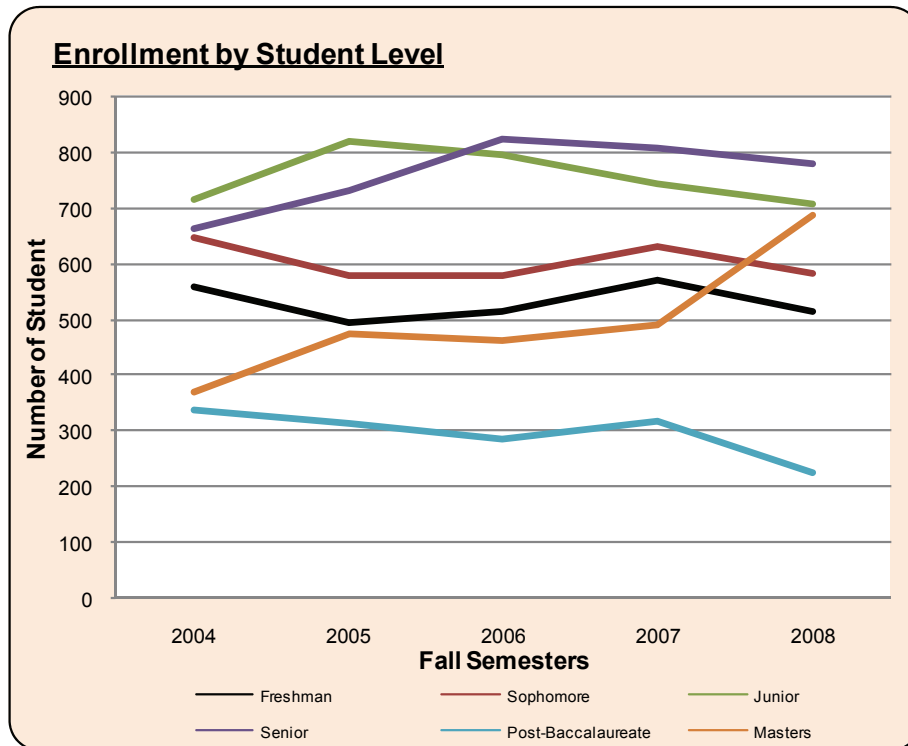
Freshman Profile (Fall 2008)

Origin	First-time	324	63.04%
	Transfer	36	7.00%
	Continuing	154	29.96%
	Total	514	
Location of Application	Ector/ Midland	304	59.14%
	Other Texas	181	35.21%
	Other U.S.	24	4.67%
	International	5	0.97%
Ethnicity	American Indian or Alaskan Native	3	0.58%
	Asian or Pacific Islander	3	0.58%
	Black	29	5.64%
	Hispanic	231	44.94%
	International	7	1.36%
	White	235	45.72%
	Unknown	6	1.17%
Averages	Age	19.14	
	Semester Credit Hours	13.37	
	ACT Composite	18.53	
	ACT English	19.41	
	ACT Math	20.57	
	SAT Composite	985.67	
	SAT Verbal	485.44	
	SAT Math	500.27	
Developmental Classes	Freshman in Developmental Writing	44	
	Freshman in Developmental Reading	19	
	Freshman in Developmental Math	217	

Students

Student Enrollment (Fall)

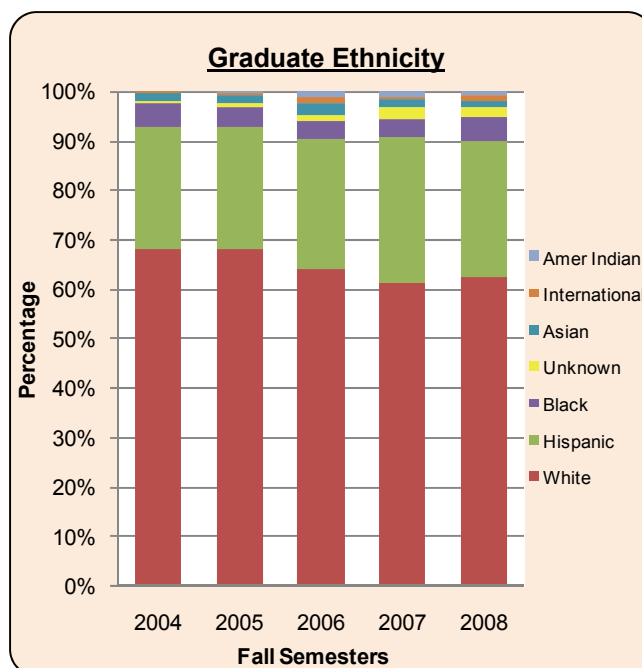
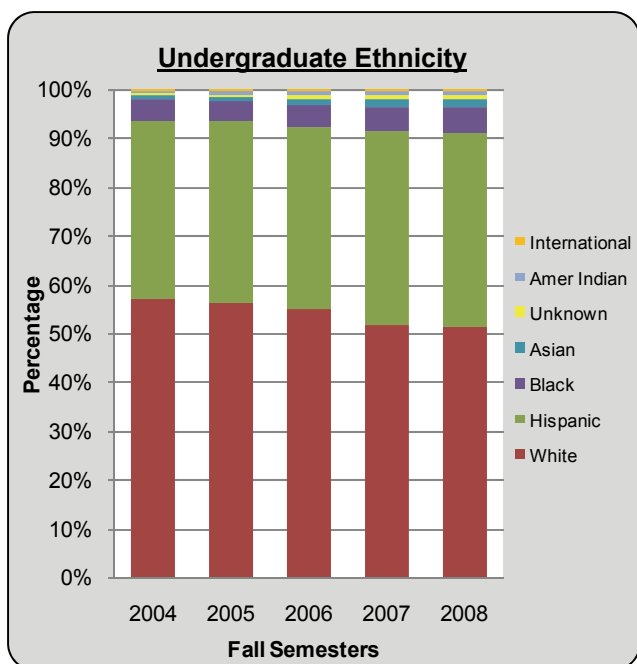
Level	Class	2004	2005	2006	2007	2008
Undergraduate	Freshman	560	494	516	571	514
	Sophomore	648	577	578	633	583
	Junior	714	821	797	743	707
	Senior	663	729	822	807	780
Undergrad Total		2585	2621	2713	2754	2584
Graduate	Post-Baccalaureate	338	312	287	316	225
	Masters	368	473	462	489	687
Grad Total		706	785	749	805	912
Grand Total		3291	3406	3462	3559	3496



Students

Student Enrollment by Ethnicity (Fall)

Level	Ethnicity	2004	2005	2006	2007	2008
Undergraduate	American Indian	13	27	21	23	19
	Asian	19	24	33	42	36
	Black	118	112	124	143	143
	Hispanic	937	977	1014	1087	1029
	International	8	3	11	11	15
	White	1477	1467	1488	1427	1319
	Unknown	13	11	22	21	23
Undergraduate Total		2585	2621	2713	2754	2584
Graduate	American Indian		4	10	9	7
	Asian	12	14	16	12	13
	Black	35	31	27	29	45
	Hispanic	175	194	198	238	248
	International	1	2	9	5	11
	White	480	534	480	493	571
	Unknown	3	6	9	19	17
Graduate Total		706	785	749	805	912
Grand Total		3291	3406	3462	3559	3496



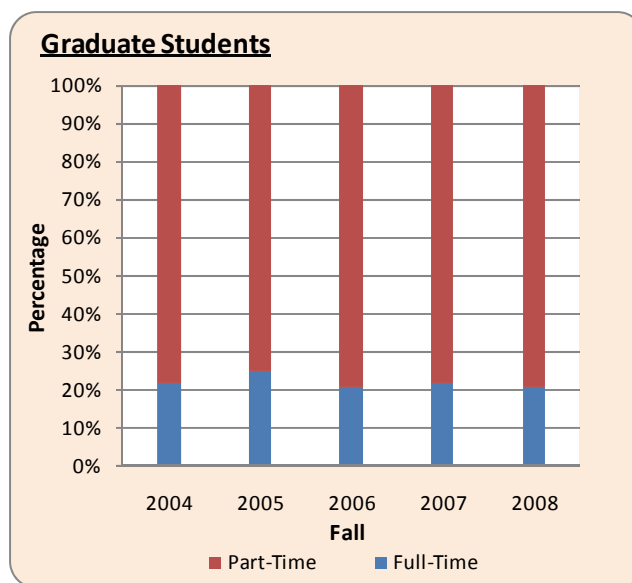
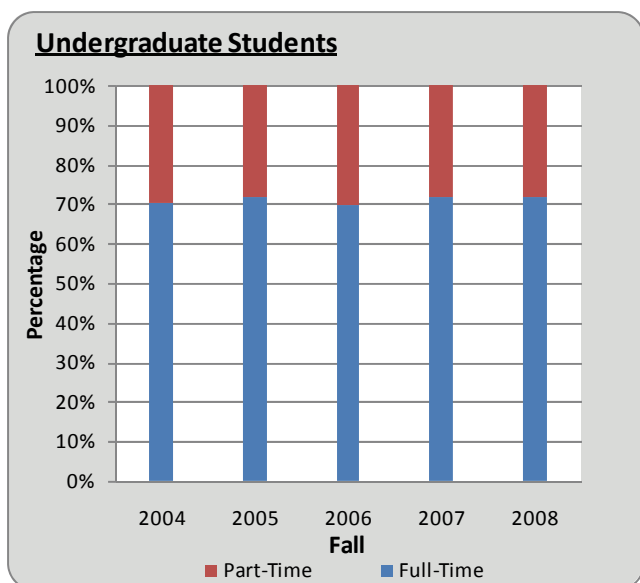
Students

Student Enrollment by Full-Time Status (Fall)

Level	PT/FT	2004	2005	2006	2007	2008
Undergraduate*	Full-Time	1810	1886	1896	1978	1852
	Part-Time	775	735	817	776	732
Undergraduate Total		2585	2621	2713	2754	2584
Graduate**	Full-Time	155	199	158	175	190
	Part-Time	551	586	591	630	722
Graduate Total		706	785	749	805	912
Grand Total		3291	3406	3462	3559	3496

* Full-Time undergraduate students: Students enrolled for 12 or more semester credit hours.

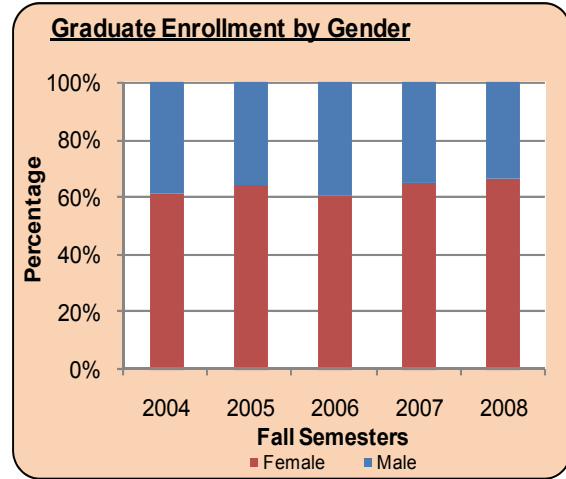
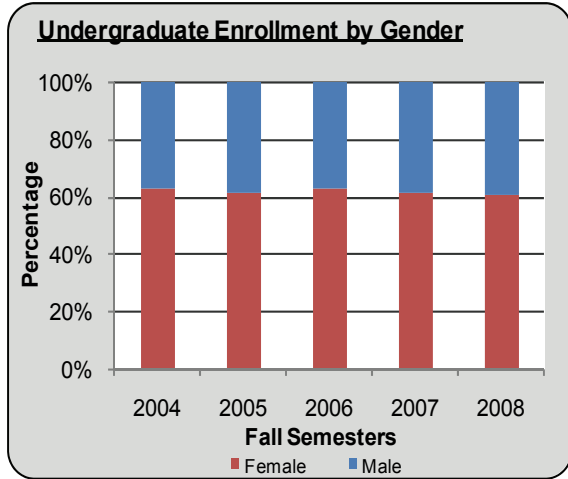
** Full-Time graduate students: Students enrolled for 9 or more semester credit hours.



Students

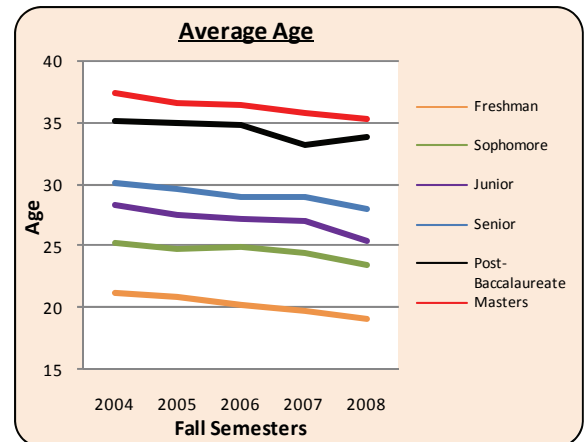
Student Enrollment by Gender (Fall)

Level	Gender	2004	2005	2006	2007	2008
Undergraduate	Female	1616	1604	1691	1678	1559
	Male	969	1017	1022	1076	1025
Undergraduate Total		2585	2621	2713	2754	2584
Graduate	Female	432	502	453	525	606
	Male	274	283	296	280	306
Graduate Total		706	785	749	805	912
Grand Total		3291	3406	3462	3559	3496



Average Student Age (Fall)

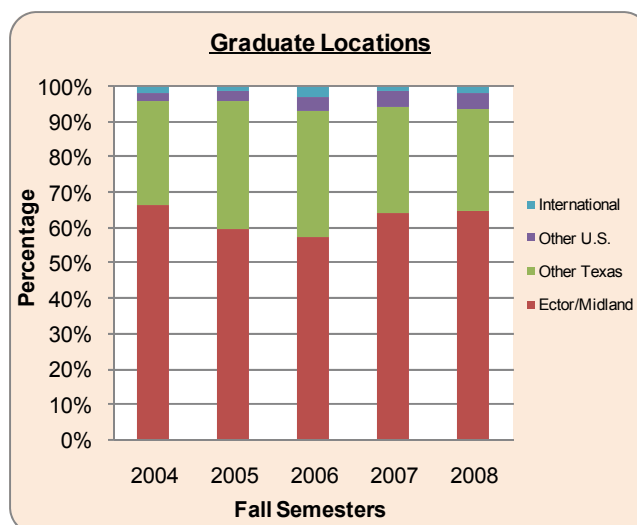
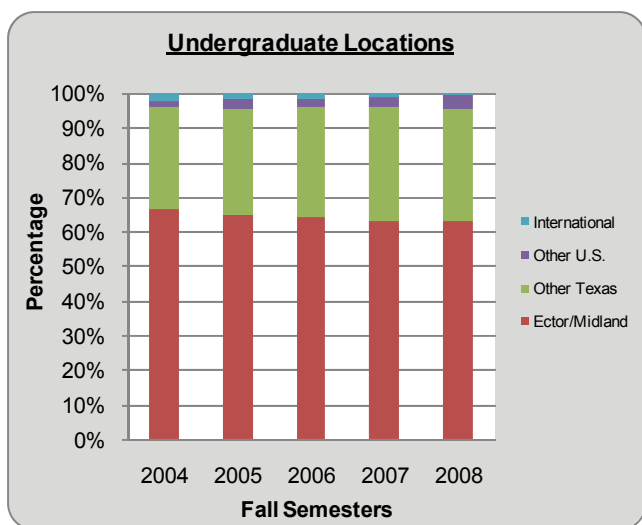
Level	2004	2005	2006	2007	2008
Freshman	21.2	21.0	20.3	19.8	19.1
Sophomore	25.2	24.8	24.9	24.4	23.4
Junior	28.3	27.4	27.2	27.0	25.4
Senior	30.1	29.7	29.1	28.9	28.1
Post-Baccalaureate	35.2	35.0	34.9	33.2	34.0
Masters	37.4	36.6	36.5	35.7	35.3
Grand Total	28.6	28.5	28.1	27.6	27.2



Students

Student Location on Application (Fall)

Level	Location	2004	2005	2006	2007	2008
Undergraduate	Ector/Midland	1722	1692	1742	1732	1631
	Texas	755	803	866	917	833
	Other U.S.	54	77	62	79	101
	International	54	49	43	26	19
Undergraduate Total		2585	2621	2713	2754	2584
Graduate	Ector/Midland	470	468	432	517	590
	Texas	210	285	266	243	266
	Other U.S.	16	21	31	36	43
	International	10	11	20	9	13
Graduate Total		706	785	749	805	912
Grand Total		3291	3406	3462	3559	3496



Count of Locations

		2004	2005	2006	2007	2008
Texas	Number of Counties	131	141	141	138	129
Other U.S.	Number of States	19	25	31	37	35
International	Number of Countries	15	15	19	17	20



Location	County	2004	2005	2006	2007	2008
Ector/Midland	Ector	1437	1416	1408	1451	1426
	Midland	755	744	766	798	795
Ector/Midland Total		2192	2160	2174	2249	2221
Texas	Anderson	1	1	1		
	Andrews	90	93	93	100	92
	Angelina	1	1	1		1
	Aransas		1			1
	Atascosa	2				
	Austin	3	2	1	1	2
	Bailey	1	1			
	Bandera	1	1		1	1
	Bastrop		2	2	2	1
	Baylor	4	2	2	3	2
	Bell	5	10	13	7	8
	Bexar	37	29	40	36	31
	Blanco	1			1	
	Borden	1		1	1	
	Bowie	1			1	
	Brazoria	2	4	7	2	2
	Brazos	3	3	3	3	
	Brewster	1	2	1	5	7
	Brown	3	3	5	2	2
	Burleson		1	1	1	
	Burnet		5	8	9	7
	Caldwell			2	2	2
	Calhoun			1		
	Callahan	1				1
	Cameron	10	8	17	12	18
	Carson	1	1	2		
	Cass			1		
	Castro					1
	Chambers			2		
	Cherokee	2	2	1	1	2
	Childress	1				
	Clay					
	Cochran	4	1	4	3	1
	Coke	3	2	2	1	
	Coleman		2	1	1	1
	Collin	4	11	10	10	12
	Colorado	1				
	Comal	2	4	2	3	2
	Comanche			3	4	4
	Concho		1	2	2	1
	Coryell	5	3	1		1
	Cottle	1				
	Crane	28	39	29	35	27
	Crockett		2	6	8	4
	Crosby			1	1	
	Culberson	1	2	1	3	3
	Dallam	1	1		1	1
Dallas	16	20	32	49	42	
Dawson	21	25	24	25	21	

Student Location on Application (Fall)



Student Location on Application (Fall)

Location	County	2004	2005	2006	2007	2008
	Denton	9	9	10	6	9
	DeWitt				1	1
	Dickens		1			
	Donley	1		1	1	
	Duval		1			
	Eastland	1	2	1	3	3
	El Paso	42	40	31	32	38
	Ellis			1	4	4
	Erath	1	3	3		
	Fannin					1
	Falls		1			
	Fayette		1	1		
	Fisher	1	5	5	4	3
	Floyd	1				
	Fort Bend	4	7	12	8	9
	Franklin				1	
	Gaines	24	23	37	40	37
	Galveston	5	6	5	6	5
	Garza	4	7	3	2	
	Gillespie				1	1
	Glasscock	3	1	3	5	3
	Gonzales	1				
	Grayson	2	2	1		
	Gregg		3	3	2	2
	Guadalupe		3	7	3	4
	Hale		1	2	3	4
	Hamilton	3	1	2	1	
	Hansford				1	1
	Hardeman			1	2	
	Hardin		1			1
	Harris	33	24	22	37	32
	Harrison	4				1
	Hartley			1		
	Haskell				1	2
	Hays	4	5	5	5	4
	Hemphill			1		
	Henderson	2	1	5	3	2
	Hidalgo	4	9	8	7	10
	Hill	1	4	1	3	1
	Hockley	7	8	10	10	4
	Hood	1		2	3	1
	Hopkins	1				1
	Houston		5	2	1	2
	Howard	105	105	99	90	89
	Hudspeth					2
	Hunt	3	6	2	2	1
	Hutchinson		1	1		
	Irion			1		1
	Jackson			2	2	
	Jasper			1		
	Jeff Davis	1	1	3	3	4
	Jefferson	1	2	1		1
	Jim Hogg	1	1	1	1	1
	Jim Wells		1	1		



Student Location on Application (Fall)

Location	County	2004	2005	2006	2007	2008
	Johnson	2	3	3	2	5
	Jones	3	2	1		1
	Karnes				1	1
	Kaufman	1	2	2	4	4
	Kendall		2		1	2
	Kent	1	2	1		
	Kerr	2	4	1	3	4
	Kimble	1	1		1	1
	King		2	1	1	
	Kleberg				2	2
	Lamar	1	1	1		
	Lamb	2		2	2	2
	Lavaca		1	1	2	2
	Lee	1				
	Leon		1			1
	Liberty	2	2	3	1	1
	Limestone	1				
	Llano	1		1	2	1
	Lubbock	18	24	21	28	34
	Lynn	1	1			
	Marion	4	2	1	1	1
	Martin	16	21	23	23	15
	Mason		1			
	Matagorda	1	2	3	1	1
	Maverick		1			
	McCulloch	3	2	2	1	3
	McLennan	9	4	4	5	4
	McMullen				1	
	Medina	3	2		1	
	Milam			1	2	
	Mills		2	2	2	2
	Mitchell	8	10	9	4	5
	Montgomery	1	2	4	3	2
	Moore	2			2	
	Motley			1	1	
	Nacogdoches		3		3	
	Navarro	4	3	2	3	1
	Nolan	1	2	1	2	5
	Nueces	5	12	7	4	5
	Orange	1	1	2		
	Panola	1				
	Parker	2	2	6	6	6
	Parmer	1	1	1		
	Pecos	22	34	44	34	27
	Potter	4	1	1	2	4
	Presidio	15	13	12	20	16
	Randall	2	4	4	2	3
	Reagan	1	8	6	6	6
	Real			1		
	Red River		1			
	Reeves	28	41	50	55	43
	Refugio				1	1



Student Location on Application (Fall)

Location	County	2004	2005	2006	2007	2008
	Roberts		1			
	Robertson		1			
	Rockwall	2	2	1	2	1
	Runnels					1
	Rusk			1	1	2
	San Patricio		1	2	2	1
	Schleicher	1	1	1	1	
	Scurry	22	20	22	14	17
	Sherman					1
	Smith	8	6	3	14	10
	Somervell			1	1	
	Starr	2	1	2		
	Stephens	4	2	1	1	1
	Sterling	1	2	2	2	2
	Sutton	1	1	1	1	
	Tarrant	43	49	50	50	50
	Taylor	2	3	6	7	10
	Terrell	3	3	3	4	2
	Terry	1	1	2	4	3
	Throckmorton				1	
	Titus	2	1	3	2	1
	Tom Green	7	13	12	13	13
	Travis	12	13	19	13	15
	Upshur		1	1		
	Upton	18	15	14	12	17
	Uvalde	1	1	1	1	
	Val Verde	1	4	3	4	3
	Van Zandt				3	2
	Victoria					1
	Walker	1	1			
	Waller	1				
	Ward	68	77	63	74	80
	Washington	2	1			
	Webb	3	1	2	2	2
	Wharton					1
	Wichita	2	2	1	2	2
	Wilbarger	1				
	Williamson	12	9	14	20	18
	Wilson	1	1			
	Winkler	28	33	37	29	34
	Wise	3	3	3	3	
	Wood		1			
	Yoakum	12	18	15	10	5
	Young				1	1
	Zapata				1	
Other Texas Total		965	1088	1132	1160	1093



Student Location on Application (Fall)

Location	County	2004	2005	2006	2007	2008
Other U.S.	Alabama		1	1		
	Alaska	1				1
	Arizona	1	3	4	8	13
	Arkansas		1	1		1
	California	9	12	11	11	15
	Colorado	5	1	3	3	4
	Connecticut			1	1	
	Florida	1	3	3	4	7
	Georgia	2			2	3
	Hawaii	1	1		2	3
	Illinois	3	1	1	4	5
	Indiana				1	1
	Iowa	2	1	1		2
	Kansas	1	2		5	5
	Kentucky				1	2
	Louisiana	2	4	5		4
	Maine				1	
	Maryland		2	1	2	2
	Massachusetts			1	1	1
	Michigan					
	Minnesota			1	2	3
	Mississippi	1	1	1	1	
	Missouri			1	1	3
	Montana			1	1	1
	Nebraska			1	3	
	Nevada			1	1	2
	New Jersey		1	2		2
	New Mexico	33	46	33	29	31
	New York	2	3	2	2	6
	North Carolina		1	1	2	2
	Ohio		1		1	3
	Oklahoma	2	3	4	5	6
	Oregon	1		2	2	
	Pennsylvania		1	2	2	4
	Puerto Rico		3	1	1	1
	Rhode Island				1	
	South Carolina		1			1
	South Dakota				1	1
	Tennessee	1			1	
	Utah			1	2	2
	Virginia	1	3	3	6	7
Washington			1	2	2	
West Virginia			1	1	2	
Wisconsin	1	1	1	1	2	
Wyoming		1		1		
Other U.S. Total		70	98	93	115	150



Student Location on Application (Fall)

Location	County	2004	2005	2006	2007	2008
International	Australia			1	2	3
	Bosnia-Herzegovina	2				
	Bulgaria			1	1	
	Cameroon					1
	Canada	4	2	6	1	4
	China, People's Rep of		1	1	3	1
	Colombia			2	1	
	Dominican Republic					1
	Ecuador			1	1	
	England	1				1
	Germany	1	1	1	1	
	Ghana		1			
	Grenada		1			
	Guatemala	1	1	1		
	India	1	2	2	1	1
	Iran		1	1	1	
	Korea, Republic of					1
	Mexico	44	42	34	14	7
	Nigeria	1				
	Norway	1			1	1
	Pakistan					1
	Peru	1	2	2	1	1
	Philippines	1				1
	Romania			1	1	1
	Saudi Arabia					1
	Serbia		1	2	3	1
	Slovakia	1	1			1
	Thailand	1	1	1	1	1
	Trinidad & Tobago			2	1	2
	Turkey		1	1		1
	United Kingdom			2	1	
Venezuela	1					
Zimbabwe	2	2	1			
International Total		64	60	63	35	32
Grand Total		3291	3406	3462	3559	3496



Majors

Enrollment by Majors (fall)

Major	Level	2004	2005	2006	2007	2008
SCHOOL OF BUSINESS						
BUSINESS						
MANAGEMENT	Bachelor's	202	210	196	216	263
	Post-Baccalaureate*	41	15	16	17	15
	Master's	62	98	99	89	100
ACCOUNTANCY	Bachelor's	150	160	184	179	161
	Post-Baccalaureate*	7	4	15	18	17
	Master's	13	13	9	15	15
ECONOMICS	Bachelor's	12	8	16	13	9
	Post-Baccalaureate*	1		1		
FINANCE	Bachelor's	51	67	83	74	67
MARKETING	Bachelor's	62	59	77	67	73
DEPARTMENT OF ENGINEERING AND TECHNOLOGY						
INDUSTRIAL TECHNOLOGY	Bachelor's		13	22	31	31
PRE-ENGINEERING	Bachelor's			5	36	59
	Post-Baccalaureate*				3	2
SCHOOL OF BUSINESS TOTAL		601	647	723	758	812
SCHOOL OF EDUCATION						
DEPARTMENT OF EDUCATIONL LEADERSHIP AND FOUNDATIONS						
EDUCATION-EDUCATIONAL LEADERSHIP	Post-Baccalaureate*	20	21	5	12	4
	Master's	55	58	64	52	112
EDUCATION-COUNSELING	Post-Baccalaureate*	8	9	11	8	5
	Master's	34	41	31	34	61
DEPARTMENT OF CURRICULUM AND INSTRUCTION						
EDUCATION-BILINGUAL/ESL	Post-Baccalaureate*	1	5	3	2	
	Master's	8		2	9	20
EDUCATION-SPECIAL EDUCATION	Post-Baccalaureate*	4	3		2	
	Master's	10	13	10	12	22
EDUCATION-PROFESSIONAL EDUCATION	Post-Baccalaureate*	8	5	1	1	1
	Master's	14	13	5	8	12
EDUCATION-EARLY CHILDHOOD	Post-Baccalaureate*		1	2	3	
	Master's	6	7	6	4	14
EDUCATION-READING	Post-Baccalaureate*	3	4	2	4	
	Master's	12	12	14	14	38
TEACHER CERTIFICATION PROGRAM & OTHER						
TEACHER CERTIFICATION PROGRAM		64	65	57	81	45
EDUCATION-GENERAL	Master's	27	62	58	55	44
SCHOOL OF EDUCATION TOTAL		274	319	271	301	378

* Post- Baccalaureate: Students who enrolled graduate-level courses, but have not been accepted into Master's program.



Majors

Enrollment by Majors (fall)

Major	Level	2004	2005	2006	2007	2008
COLLEGE OF ARTS AND SCIENCES						
DEPARTMENT OF BIOLOGY						
BIOLOGY	Bachelor's	207	193	231	230	204
	Post-Baccalaureate*	4	5	3	11	6
	Master's	10	7	5	6	6
MULTIDISCIPLINARY STUDIES	Bachelor's	18	31	37	52	52
	Post-Baccalaureate*			1	1	
TOTAL		239	236	277	300	268
DEPARTMENT OF HISTORY						
HUMANITIES	Bachelor's	83	79	75	79	56
	Post-Baccalaureate*	1	5	2		
HISTORY	Bachelor's	137	131	126	128	99
	Post-Baccalaureate*	10	8	8	9	3
	Master's	13	14	14	15	28
TOTAL		244	237	225	231	186
DEPARTMENT OF KINESIOLOGY						
APPLIED ARTS AND SCIENCES	Bachelor's	2	8	12	20	11
KINESIOLOGY	Bachelor's	180	207	196	214	182
	Post-Baccalaureate*	21	10	13	7	6
	Master's	47	52	46	59	65
TOTAL		250	277	267	300	264
DEPARTMENT OF LITERATURE AND LANGUAGES						
SPANISH	Bachelor's	104	99	80	72	61
	Post-Baccalaureate*	10	7	8	3	2
	Master's	10	14	12	13	21
ENGLISH	Bachelor's	94	102	106	88	86
	Post-Baccalaureate*	4	5	6	4	2
	Master's	13	16	13	13	25
TOTAL		235	243	225	193	197
DEPARTMENT OF MATHEMATICS AND COMPUTER SCIENCE						
COMPUTER SCIENCE	Bachelor's	80	74	55	48	49
	Post-Baccalaureate*	2		1	2	
	Master's				5	6
INFORMATION SYSTEMS	Bachelor's	17	21	16	12	12
MATHEMATICS	Bachelor's	66	65	67	62	44
	Post-Baccalaureate*	5	3	2		
TOTAL		170	163	141	129	111



Majors

Enrollment by Majors (fall)

Major	Level	2004	2005	2006	2007	2008
COLLEGE OF ARTS AND SCIENCES (Continued)						
DEPARTMENT OF PHYSICAL SCIENCES						
ENVIRONMENTAL SCIENCE	Bachelor's	9	15	14	10	9
	Post-Baccalaureate*	1		1		
CHEMISTRY	Bachelor's	17	16	27	27	30
	Post-Baccalaureate*		3	1		
GEOLOGY	Bachelor's	13	11	11	14	18
	Post-Baccalaureate*	3	4	1	3	2
	Master's	2	6	10	10	14
EARTH SCIENCE (Phased out in 2008)	Bachelor's	3	3	2	1	1
TOTAL		48	58	67	65	74
DEPARTMENT OF PSYCHOLOGY						
CHILD AND FAMILY STUDIES	Bachelor's	179	172	201	215	228
	Post-Baccalaureate*		4	6	1	
PSYCHOLOGY	Bachelor's	186	178	182	206	164
	Post-Baccalaureate*	21	3	1	7	4
PSYCHOLOGY-CLINICAL PSYCHOLOGY	Post-Baccalaureate*	7	6	5	2	7
	Master's	21	24	27	28	36
PSYCHOLOGY-APPLIED RESEARCH	Post-Baccalaureate*	1	2	1		
	Master's	9	11	4	6	6
TOTAL		424	400	427	465	445
DEPARTMENT OF SOCIAL SCIENCES						
LEADERSHIP STUDIES	Bachelor's	9	6	4	9	11
CRIMINAL JUSTICE ADMINISTRATION	Post-Baccalaureate*	6	5	3	6	5
	Master's	18	7	5	10	13
CRIMINAL JUSTICE	Bachelor's	73	100	95	108	84
PUBLIC ADMINISTRATION	Post-Baccalaureate*	12	9	6	12	11
	Master's	1	17	27	22	26
SOCIAL WORK	Bachelor's	17	33	37	34	37
	Post-Baccalaureate*		2			2
CRIMINOLOGY	Bachelor's	115	118	111	100	95
	Post-Baccalaureate*		1	3		
POLITICAL SCIENCE	Bachelor's	47	43	39	47	43
	Post-Baccalaureate*	1	2	1		
SOCIOLOGY	Bachelor's	37	42	32	26	28
TOTAL		336	385	363	374	355
DEPARTMENT OF VISUAL AND PERFORMING ARTS						
COMMUNICATION	Bachelor's	59	65	78	86	79
	Post-Baccalaureate*	2	1	1		1
ART	Bachelor's	79	82	75	67	52
	Post-Baccalaureate*	2	1	2	1	3
TOTAL		142	149	156	154	135
COLLEGE OF ARTS AND SCIENCES TOTAL		2088	2148	2148	2211	2035
UNDECLARED MAJORS						
	Undergraduate	218	162	124	137	126
NON-DEGREE SEEKING						
	Undergraduate	58	48	97	45	60
	Graduate	52	82	99	106	85



Degrees

Degree offered

Programs	Level		Degree Awarded (AY 2008)		CIP Code
	Bachelor's	Master's	Bachelor's	Master's	
SCHOOL OF BUSINESS					
BUSINESS					
MANAGEMENT ¹	BBA	MBA	36	17	52.0201.00
ACCOUNTANCY ¹	BBA	MPA	37	2	52.0301.00
ECONOMICS	BA		1		52.0601.00
FINANCE ¹	BBA		16		52.0801.00
MARKETING ¹	BBA		14		52.1401.00
DEPARTMENT OF ENGINEERING AND TECHNOLOGY					
INDUSTRIAL TECHNOLOGY	BS		2		15.0612.00
MECHANICAL ENGINEERING	BS		(new in 2009)		14.1901.00
SCHOOL OF EDUCATION ²					
DEPARTMENT OF EDUCATIONAL LEADERSHIP AND FOUNDATIONS					
EDUCATION-EDUCATIONAL LEADERSHIP ³		MA		33	13.0401.00
EDUCATION-COUNSELING ³		MA		9	13.1101.00
DEPARTMENT OF CURRICULUM AND INSTRUCTION					
EDUCATION-BILINGUAL/ESL		MA		1	13.0201.00
EDUCATION-SPECIAL EDUCATION ³		MA		6	13.1001.00
EDUCATION-PROFESSIONAL EDUCATION		MA		1	13.1206.00
EDUCATION-EARLY CHILDHOOD		MA		2	13.1210.00
EDUCATION-READING ³		MA		0	13.1315.00
Teacher Certification Program ³	(non-degree program)				13.0301.00

¹ Association to Advance Collegiate Schools of Business (AACSB- International)

² National Council for Accreditation of Teacher Education (NCATE)

³ State Board for Educator Certification (SBEC)



Degrees

Programs	Level		Degree Awarded (AY 2008)		CIP Code
	Bachelor's	Master's	Bachelors'	Master's	
COLLEGE OF ARTS AND SCIENCES					
DEPARTMENT OF BIOLOGY					
BIOLOGY	BS	MS	24	2	26.0101.00
MULTIDISCIPLINARY STUDIES	BA		8		30.9999.01
DEPARTMENT OF HISTORY					
HUMANITIES	BA		25		24.0103.00
HISTORY	BA	MA	23	2	54.0101.00
DEPARTMENT OF KINESIOLOGY					
APPLIED ARTS AND SCIENCES	BAAS		8		30.9999.40
KINESIOLOGY	BS	MS	32	10	31.0501.10
ATHLETIC TRAINING	BS		0		51.0913.00
DEPARTMENT OF LITERATURE AND LANGUAGES					
SPANISH	BA	MA	27	1	16.0905.00
ENGLISH	BA	MA	26	0	23.0101.00
DEPARTMENT OF MATHEMATICS AND COMPUTER SCIENCE					
COMPUTER SCIENCE	BS	MS	12	0	11.0101.00
INFORMATION SYSTEMS	BS		3		11.0401.00
MATHEMATICS	BS		13		27.0101.00
DEPARTMENT OF PHYSICAL SCIENCES					
ENVIRONMENTAL SCIENCE	BS		4		03.0104.00
CHEMISTRY	BS		4		40.0501.00
GEOLOGY	BS	MS	1	0	40.0601.00
DEPARTMENT OF PSYCHOLOGY					
CHILD AND FAMILY STUDIES	BA		57		19.0701.00
PSYCHOLOGY	BA		53		42.0101.00
PSYCHOLOGY-CLINICAL PSYCHOLOGY		MA		9	42.0201.00
PSYCHOLOGY-APPLIED RESEARCH		MA		1	42.0801.00
DEPARTMENT OF SOCIAL SCIENCES					
LEADERSHIP STUDIES	BA		2		30.9999.22
CRIMINAL JUSTICE ADMINISTRATION		MS		6	43.0103.00
CRIMINAL JUSTICE ¹	BS		8		43.0104.00
PUBLIC ADMINISTRATION		MPA		7	44.0401.00
SOCIAL WORK ²	BSW		9		44.0701.00
CRIMINOLOGY	BA		25		45.0401.00
POLITICAL SCIENCE	BA		8		45.1001.00
SOCIOLOGY	BA		13		45.1101.00
DEPARTMENT OF VISUAL AND PERFORMING ARTS					
COMMUNICATION	BA		18		09.0101.00
ART ³	BA / BFA		9		50.0701.00

¹ In cooperation with UT Arlington and UT Brownsville

² Council on Social Work Education (CSWE)

³ National Association of Schools of Art and Design (NASAD)



Graduations

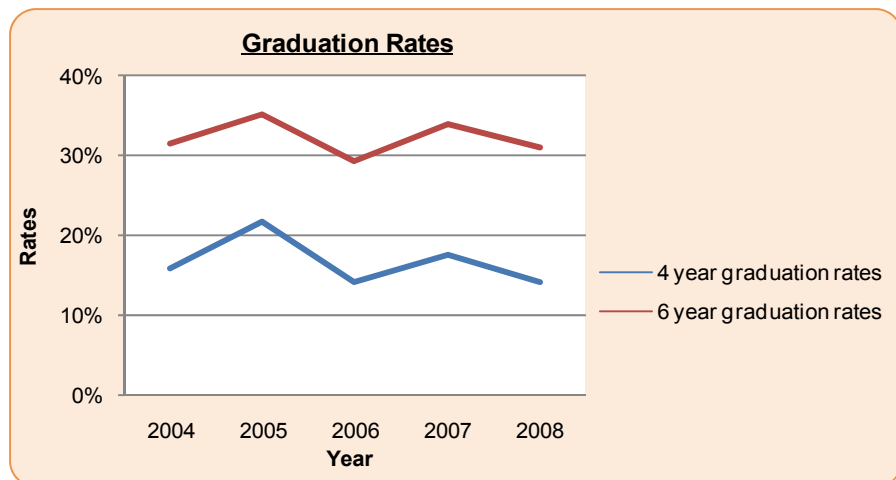
Graduations by Ethnicity

Level	Ethnicity	2004	2005	2006	2007	2008
Baccalaureate	American Indian or Alaskan Native	2	1	1	4	3
	Asian or Pacific Islander	3	6	3		5
	Black	17	14	21	12	24
	Hispanic	145	160	175	179	182
	International	2	2		4	3
	White	273	250	283	307	299
	Unknown	1	4	2	4	2
Baccalaureate Total		443	437	485	510	518
Masters	American Indian or Alaskan Native					1
	Asian or Pacific Islander				2	1
	Black	8	3	4	2	4
	Hispanic	12	25	27	34	38
	International	1	1		1	1
	White	88	98	96	80	63
	Unknown				1	1
Masters Total		109	127	127	120	109
Grand Total		552	564	612	630	627

* Include the second and third degrees

Graduation Rates

	2004	2005	2006	2007	2008
4 year graduation rates	16.0%	21.8%	14.2%	17.6%	14.3%
6 year graduation rates	31.3%	35.1%	29.2%	33.9%	31.0%



Graduations

Graduations by Major (Baccalaureate)

Major	2004	2005	2006	2007	2008
Child and Family Studies	26	51	56	59	57
Psychology	32	35	43	38	53
Accountancy	18	20	23	35	37
Management	28	26	34	31	36
Kinesiology	15	17	21	31	32
Spanish	39	22	32	28	27
English	31	22	25	35	26
Criminology	23	17	19	23	25
Humanities	31	27	24	27	25
Biology	27	32	24	28	24
History	40	43	41	39	23
Communication	24	16	17	17	18
Finance	15	9	11	14	16
Marketing	7	6	13	16	14
Sociology	14	15	16	10	13
Mathematics	9	10	18	12	13
Computer Science	18	18	10	9	12
Art	11	19	13	12	9
Social Work			8	7	9
Applied Arts and Sciences			1	1	8
Criminal Justice			3	4	8
Political Science	18	9	13	7	8
Multidisciplinary Studies	3	1	4	8	8
Environmental Science		1		3	4
Chemistry	6	5	5	2	4
Information Systems			2	4	3
Industrial Technology					2
Leadership Studies	2	2	4	2	2
Geology	1	7	4	2	1
Economics	3	6	1	6	1
Earth Science	2	1			
Baccalaureate Total	443	437	485	510	518

* Include the second and third degrees



Graduations

Graduations by Major (Master's)

Major	2004	2005	2006	2007	2008
Education- Educational Leadership	25	34	35	34	33
Management	10	14	11	18	17
Kinesiology	2	6	5	4	10
Clinical Psychology	3	7	1	9	9
Education- Counseling	8	14	20	10	9
Public Administration			4	12	7
Criminal Justice Administration	2	6	9		6
Education- Special Education	5	4	5	4	6
History	4	7	4	4	2
Education- Early Childhood	5	1	2	3	2
Accountancy	7	2	5	2	2
Biology	4	4	3	2	2
Education- Professional Education	15	7	7	1	1
Education- Bilingual/ ESL	4	5		1	1
Spanish			7	7	1
Applied Research Psychology	1	1		2	1
English	3	7	2	1	
Education- Reading	10	6	5	5	
Geology	1	2	2	1	
Masters Total	109	127	127	120	109

Graduations by Gender

Level	Gender	2004	2005	2006	2007	2008
Baccalaureate	Female	298	289	325	351	341
	Male	145	148	160	159	177
Baccalaureate Total		443	437	485	510	518
Masters	Female	82	83	85	72	65
	Male	27	44	42	48	44
Masters Total		109	127	127	120	109
Grand Total		552	564	612	630	627

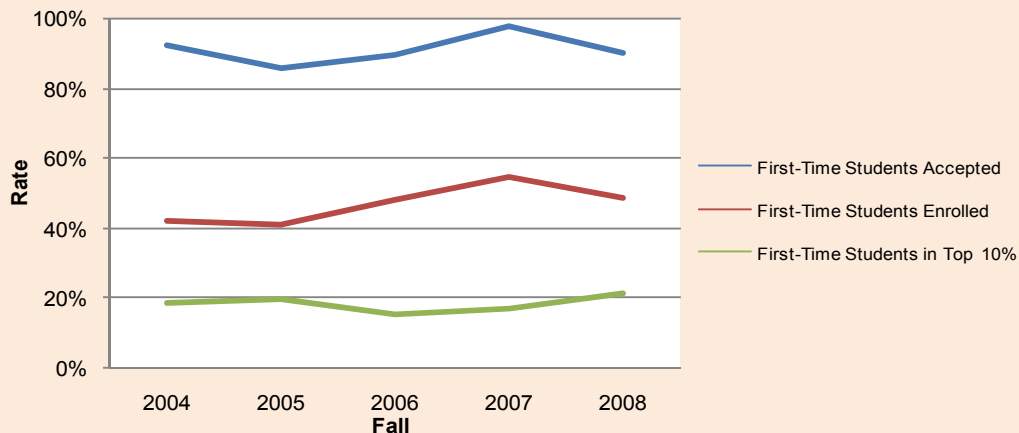


Recruitment and Retention

Student Acceptance (Fall)

	2004	2005	2006	2007	2008
First-Time Students Accepted	92.6%	85.9%	89.7%	97.9%	90.5%
First-Time Students Enrolled	42.3%	41.3%	48.4%	54.6%	48.8%
First-Time Students in Top 10%	18.5%	19.8%	15.6%	17.0%	21.3%

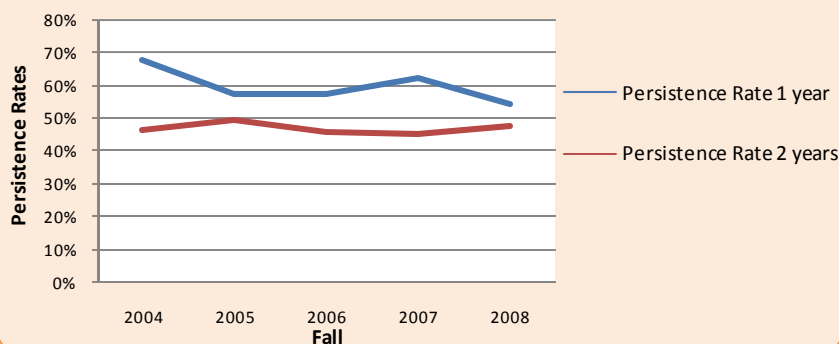
Acceptance and Enrollment Rates



Student Persistence (Fall)

Persistence Rate 1 year	2003-04	2004-05	2005-06	2006-07	2007-08
	67.8%	57.3%	57.0%	61.9%	54.0%
Persistence Rate 2 years	2002-04	2003-05	2004-06	2005-07	2006-08
	46.1%	49.2%	45.8%	45.0%	47.6%

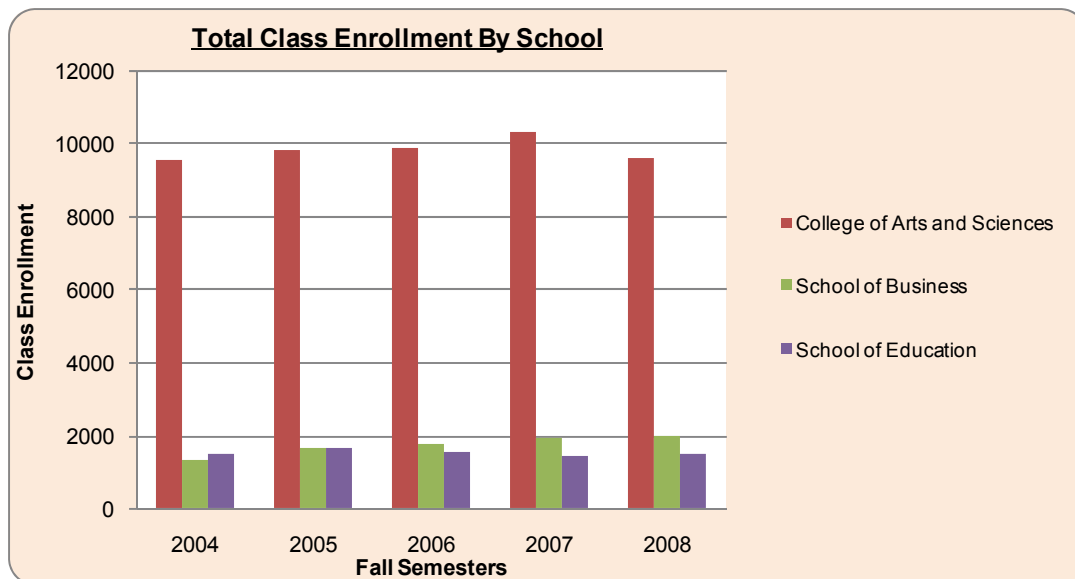
Persistence Rates



Classes

Class Enrollment and SCHs by School (Fall)

School	Data	2004	2005	2006	2007	2008
College of Arts and Sciences	Total Enrollment	8660	8886	8955	9390	8755
	Class SCH	1142.5	1221.5	1232.5	1242.5	1253
	Student SCH	23103	23432	23600	24519.5	23036.5
School of Business	Total Enrollment	1321	1631	1729	1860	1966
	Class SCH	165	202	206	200	203
	Student SCH	3963	4818	5179	5556	5774
School of Education	Total Enrollment	2397	2615	2547	2444	2377
	Class SCH	492	518	620	522	506
	Student SCH	6928	7486	7366	7066	7001
Total Class Enrollment		12378	13132	13231	13694	13098
Total Class SCH		1800	1942	2059	1965	1962
Total Student SCH		33994	35736	36145	37142	35812



Classes

Class Enrollment by level (Fall)

College of Arts and Sciences

Level	Data	2004	2005	2006	2007	2008
Developmental	Total Enrollment	169	218	182	347	323
	Number of Classes	9	10	10	19	17
Lower Division	Total Enrollment	4967	4924	5169	5444	5075
	Number of Classes	193	203	222	232	220
Upper Division	Total Enrollment	4046	4295	4118	4057	3703
	Number of Classes	234	264	264	249	247
Graduate	Total Enrollment	371	406	425	481	538
	Number of Classes	54	60	49	60	67
Total Enrollment		9553	9843	9894	10329	9639
Total Number of Classes		490	537	545	560	551

School of Business

Level	Data	2004	2005	2006	2007	2008
Lower Division	Total Enrollment	268	344	291	299	321
	Number of Classes	6	8	9	11	12
Upper Division	Total Enrollment	906	1084	1300	1422	1443
	Number of Classes	39	48	51	48	50
Graduate	Total Enrollment	147	203	180	186	232
	Number of Classes	10	13	12	12	11
Total Enrollment		1321	1631	1771	1907	1996
Total Number of Classes		55	69	72	71	73

School of Education

Level	Data	2004	2005	2006	2007	2008
Developmental*	Total Enrollment	15	18	10		
	Number of Classes	1	1	1		
Upper Division	Total Enrollment	1055	1060	1113	1024	849
	Number of Classes	69	71	97	76	70
Graduate	Total Enrollment	434	580	443	434	614
	Number of Classes	45	53	40	39	42
Total Enrollment		1504	1658	1566	1458	1463
Total Number of Classes		115	125	138	115	112

* Developmental Reading classes were re-classified under College of Arts and Sciences in Fall 2007.



Classes

Classes by Faculty Rank (Fall)

College of Arts and Sciences

Tenure	Data	2004	2005	2006	2007	2008
Tenured	Count of Class	160	196	174	160	155
	Percent of Class	32.65%	36.50%	31.93%	28.57%	28.13%
Tenure Track	Count of Class	100	104	108	106	102
	Percent of Class	20.41%	19.37%	19.82%	18.93%	18.51%
Non-tenured	Count of Class	230	237	263	294	294
	Percent of Class	46.94%	44.13%	48.26%	52.50%	53.36%
Total Number of Class		490	537	545	560	551
Total Percent of Class		100.00%	100.00%	100.00%	100.00%	100.00%

School of Business

Tenure	Data	2004	2005	2006	2007	2008
Tenured	Count of Class	25	26	22	29	26
	Percent of Class	45.45%	37.68%	30.56%	40.85%	35.62%
Tenure Track	Count of Class	26	32	41	34	26
	Percent of Class	47.27%	46.38%	56.94%	47.89%	35.62%
Non-tenured	Count of Class	4	11	9	8	21
	Percent of Class	7.27%	15.94%	12.50%	11.27%	28.77%
Total Number of Class		55	69	72	71	73
Total Percent of Class		100.00%	100.00%	100.00%	100.00%	100.00%

School of Education

Tenure	Data	2004	2005	2006	2007	2008
Tenured	Count of Class	19	28	24	18	14
	Percent of Class	16.52%	22.40%	17.39%	15.65%	12.50%
Tenure Track	Count of Class	35	29	26	25	34
	Percent of Class	30.43%	23.20%	18.84%	21.74%	30.36%
Non-tenured	Count of Class	61	68	88	72	64
	Percent of Class	53.04%	54.40%	63.77%	62.61%	57.14%
Total Number of Class		115	125	138	115	112
Total Percent of Class		100.00%	100.00%	100.00%	100.00%	100.00%



Classes

Classes by Mode of Instruction (Fall)

College of Arts and Sciences

Mode of Instruction	Data	2004	2005	2006	2007	2008
Face to face	Count of Class	444	492	487	504	499
	Total %	90.61%	91.62%	89.36%	90.00%	90.56%
Internet	Count of Class	41	44	57	56	49
	Total %	8.37%	8.19%	10.46%	10.00%	8.89%
Interactive video	Count of Class	5	1	1	0	3
	Total %	1.02%	0.19%	0.18%	0.00%	0.54%

School of Business

Mode of Instruction	Data	2004	2005	2006	2007	2008
Face to face	Count of Class	52	67	69	68	67
	Total %	94.55%	97.10%	95.83%	95.77%	91.78%
Internet	Count of Class	2	2	3	3	6
	Total %	3.64%	2.90%	4.17%	4.23%	8.22%
Interactive video	Count of Class	1	0	0	0	0
	Total %	1.82%	0.00%	0.00%	0.00%	0.00%

School of Education

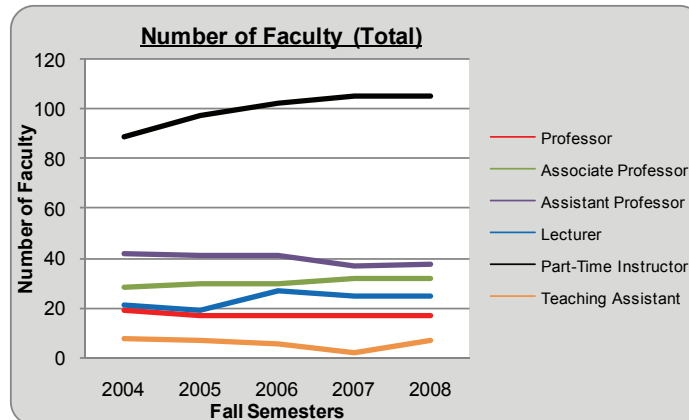
Mode of Instruction	Data	2004	2005	2006	2007	2008
Face to face	Count of Class	98	106	116	93	88
	Total %	85.22%	84.80%	84.06%	80.87%	78.57%
Internet	Count of Class	17	16	17	17	18
	Total %	14.78%	12.80%	12.32%	14.78%	16.07%
Interactive video	Count of Class	0	3	5	5	6
	Total %	0.00%	2.40%	3.62%	4.35%	5.36%



Faculty

Number of Faculty (Fall)

Gender	Rank	2004	2005	2006	2007	2008
Male	Professor	11	9	10	10	9
	Associate Professor	20	19	19	20	20
	Assistant Professor	29	28	24	21	19
	Lecturer	7	7	9	10	8
	Part-Time Instructor	38	45	49	54	50
	Teaching Assistant	5	1	1	1	4
Male Total		110	109	112	116	110
Female	Professor	8	8	7	7	8
	Associate Professor	8	11	11	12	12
	Assistant Professor	13	13	17	16	19
	Lecturer	14	12	18	15	17
	Part-Time Instructor	51	52	53	51	55
	Teaching Assistant	3	6	5	1	3
Female Total		97	102	111	102	114
Grand Total		207	211	223	218	224



By Tenure Status

Gender	Tenure	2004	2005	2006	2007	2008
Male	Tenured	31	28	29	30	29
	On tenure track	29	28	24	20	18
	Non-tenured	50	53	59	66	63
Male Total		110	109	112	116	110
Female	Tenured	15	17	16	17	16
	On tenure track	13	13	17	16	20
	Non-tenured	69	72	78	69	78
Female Total		97	102	111	102	114
Grand Total		207	211	223	218	224

*The data has been corrected.



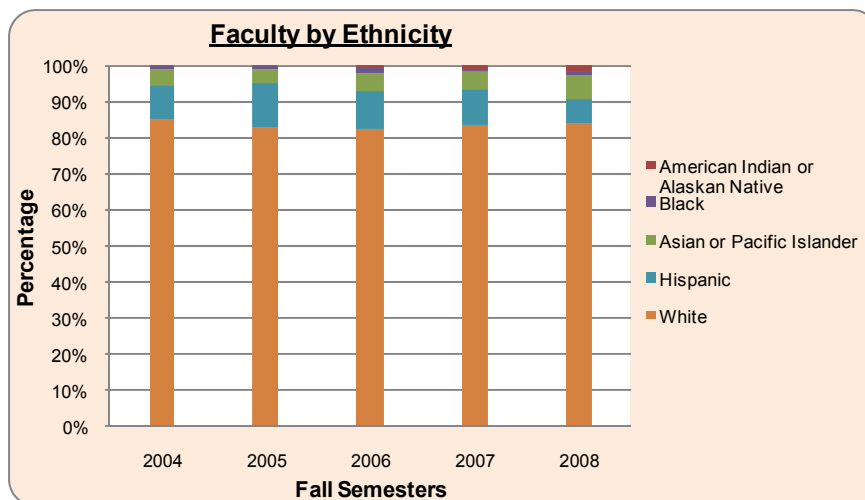
Faculty

Average Faculty Age (Fall)

Rank	2004	2005	2006	2007	2008
Professor	59.9	59.7	60.1	61.6	62.5
Associate Professor	51.9	51.7	52.5	52.5	52.7
Assistant Professor	47.7	48.2	46.0	45.8	47.1
Lecturer	51.1	53.4	51.0	51.6	49.0
Part-Time Instructor	46.8	47.5	47.8	48.1	49.9
Teaching Assistant	32.0	31.9	28.8	23.5	26.0
Grand Total	48.8	49.3	48.9	49.6	49.9

Number of Faculty by Ethnicity (Fall)

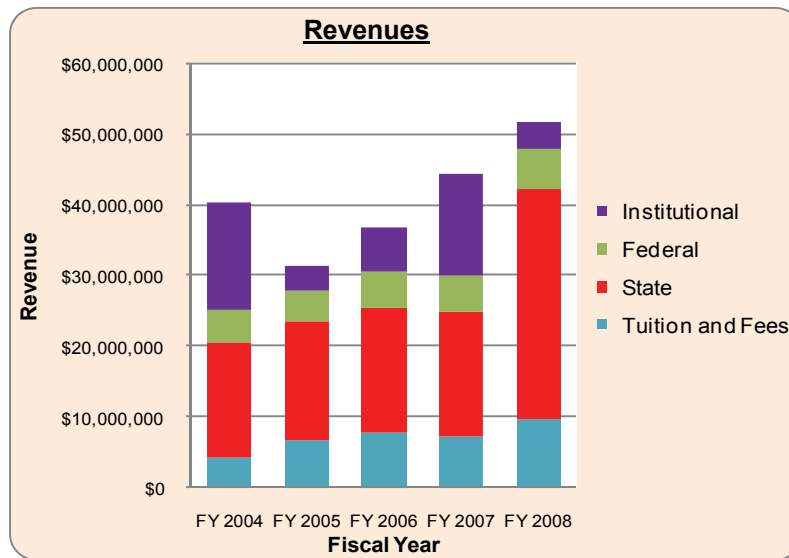
Gender	Ethnicity	2004	2005	2006	2007	2008
Male	American Indian or Alaskan Native				1	2
	Asian or Pacific Islander	5	4	6	7	9
	Black	1	1	1		
	Hispanic	13	15	14	11	3
	White	91	89	91	97	96
Male Total		110	109	112	116	110
Female	American Indian or Alaskan Native			1	1	2
	Asian or Pacific Islander	4	5	5	5	6
	Black	1	1	3	1	2
	Hispanic	7	10	10	10	12
	White	85	86	92	85	92
Female Total		97	102	111	102	114
Grand Total		207	211	223	218	224



Financial Information

Revenues

	FY 2004	FY 2005	FY 2006	FY 2007	FY 2008
Tuition and Fees	\$4,442,070	\$6,795,989	\$7,898,431	\$7,396,321	\$9,651,695
State	\$16,041,095	\$16,690,614	\$17,545,881	\$17,477,969	\$32,424,694
Federal	\$4,532,733	\$4,473,746	\$5,125,667	\$5,251,294	\$5,628,925
Institutional	\$15,167,354	\$3,462,014	\$6,314,975	\$14,128,189	\$4,020,227
Total	\$40,183,252	\$31,422,363	\$36,884,954	\$44,253,773	\$51,725,541



Per FTFE (Full Time Faculty Equivalent) and Per FTSE (Full time Student Equivalent)

	FY 2004	FY 2005	FY 2006	FY 2007	FY 2008
Total Revenue per FTFE	\$164,902	\$118,027	\$135,996	\$159,352	\$176,423
Total Revenue per FTSE	\$16,813	\$12,331	\$13,784	\$16,873	\$18,897

Gifts to University

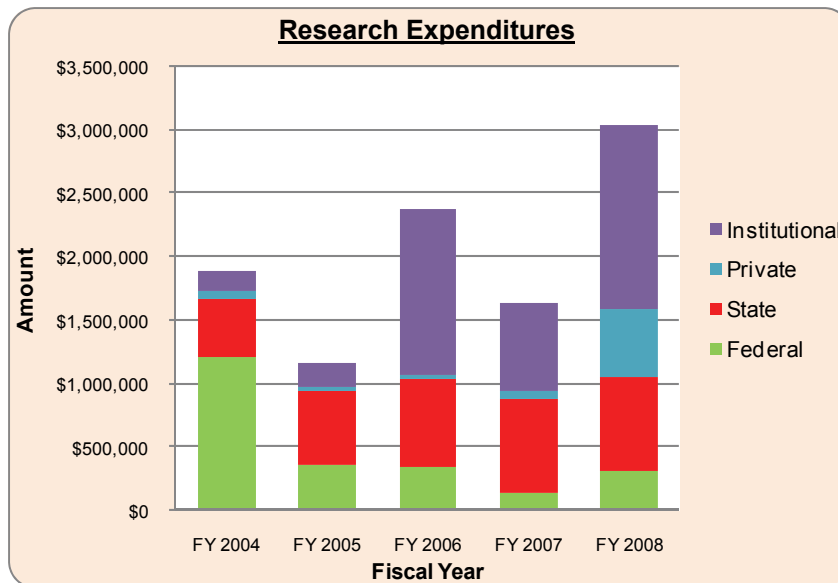
	FY 2004	FY 2005	FY 2006	FY 2007	FY 2008
Amount of Gift: Cash	\$2,507,061	\$1,774,646	\$3,500,005	\$ 2,613,158	\$6,181,259
Number of Gift	1136	1351	1165	1189	2070
Number of Donor	785	898	746	805	1588



Research

Research Expenditures

	FY 2004	FY 2005	FY 2006	FY 2007	FY 2008
Federal	\$1,215,420	\$360,016	\$348,266	\$147,220	\$313,608
State	\$461,624	\$586,641	\$694,235	\$738,247	\$742,791
Private	\$62,442	\$36,178	\$30,696	\$60,504	\$535,310
Institutional	\$156,078	\$177,859	\$1,304,459	\$701,183	\$1,451,388
Total Research Expenditures	\$1,895,564	\$1,160,694	\$2,377,656	\$1,647,154	\$3,043,098



External Grants Contract

Source	FY 2004	FY 2005	FY 2006	FY 2007	FY 2008
Federal	\$4,480,730	\$4,431,621	\$5,012,556	\$5,173,736	\$2,759,606
State	\$ 142,685	\$ 106,684	\$ 103,543	\$ 125,338	\$ 309,910
Local	\$ 22,693	\$ 16,363	\$ 8,333	\$ 14,554	\$ 28,750
Private	\$ 74,033	\$ 36,178	\$ 34,852		\$ 843,788
TOTAL	\$4,720,141	\$4,590,846	\$5,159,284	\$5,313,628	\$3,942,054

Extramural Grants

Year	FY 2004	FY 2005	FY 2006	FY 2007	FY 2008
Number of Grant	16	10	29	41	49
Number of Faculty	8	17	23	28	32



Financial Aid

Financial Aid Information (2007– 2008)

2007-2008	First-time Full-time Freshmen	Full-time Undergraduate (Include Freshman.)	Less Than Full-time Undergraduate
Number of degree-seeking undergraduate students	354	1450	676
Number of students who applied for need-based financial aid	267	1131	479
Number of students who were determined to have financial need	201	908	382
Number of students who were awarded any financial aid	201	908	382
Number of students who were awarded any need-based scholarship or grant aid	144	671	206
Number of students who were awarded any need-based self-help aid	67	472	284
Number of students who were awarded any non-need-based scholarship or grant aid	188	691	208
The average financial aid package	\$ 6,594	\$ 7,997	\$ 6,039
Average need-based scholarship and grant award	\$ 5,161	\$ 5,118	\$ 3,344
Average need-based self-help award	\$ 2,493	\$ 5,366	\$ 4,342
Average need-based loan	\$ 2,605	\$ 3,673	\$ 4,301
Number of students who had no financial need and who were awarded institutional non-need-based scholarship or grant aid	139	258	97
Average dollar amount of institutional non-need-based scholarship and grant aid awarded to students	\$ 1,981	\$ 1,928	\$ 547
Number of students who were awarded an institutional non-need-based athletic scholarship or grant	28	75	21
Average dollar amount of institutional non-need-based athletic scholarships and grants awarded to students	\$ 1,971	\$ 2,631	\$ 2,199



Cost of Attendance

Tuition and Fees (2008– 2009)

	Undergraduate		Graduate	
	In-state	Out of State	In-state	Out of State
Tuition*	\$3,264.00	\$10,008.00	\$2,844.00	\$7,650.00
Fees	\$997.60	\$997.60	\$776.20	\$776.20
Total	\$4,261.60	\$11,005.60	\$3,620.20	\$8,426.20

* Based on 24 SCH/year for undergraduates and 18 SCH/year for graduate student

On Campus Housing (Fall/ Spring)

	Falcon's Nest Apartment	Falcon's Court Apartment	Units
One- Bedroom			\$5,082
Two-Bedroom	\$5,020	\$5,025	\$4,113
Three-Bedroom			\$3,332
Four-Bedroom	\$4,600		
Efficiency		\$5,725	\$3,265

Estimated Cost (Fall/ Spring)

	Undergraduate		Graduate	
	In-state	Out of State	In-state	Out of State
Tuition and Fees	\$4,261.60	\$11,005.60	\$3,620.20	\$8,426.20
Room*	\$4,520.00	\$4,520.00	\$4,520.00	\$4,520.00
Board **	\$2,142.00	\$2,142.00	\$2,142.00	\$2,142.00
Books and Supplies	\$900.00	\$900.00	\$1,200.00	\$1,200.00
Other Expense	\$3,500.00	\$3,500.00	\$3,500.00	\$3,500.00
Total	\$15,323.60	\$22,067.60	\$14,982.20	\$19,788.20

* Average of on-campus housing

**Meal plan: 15 meals/ week

